

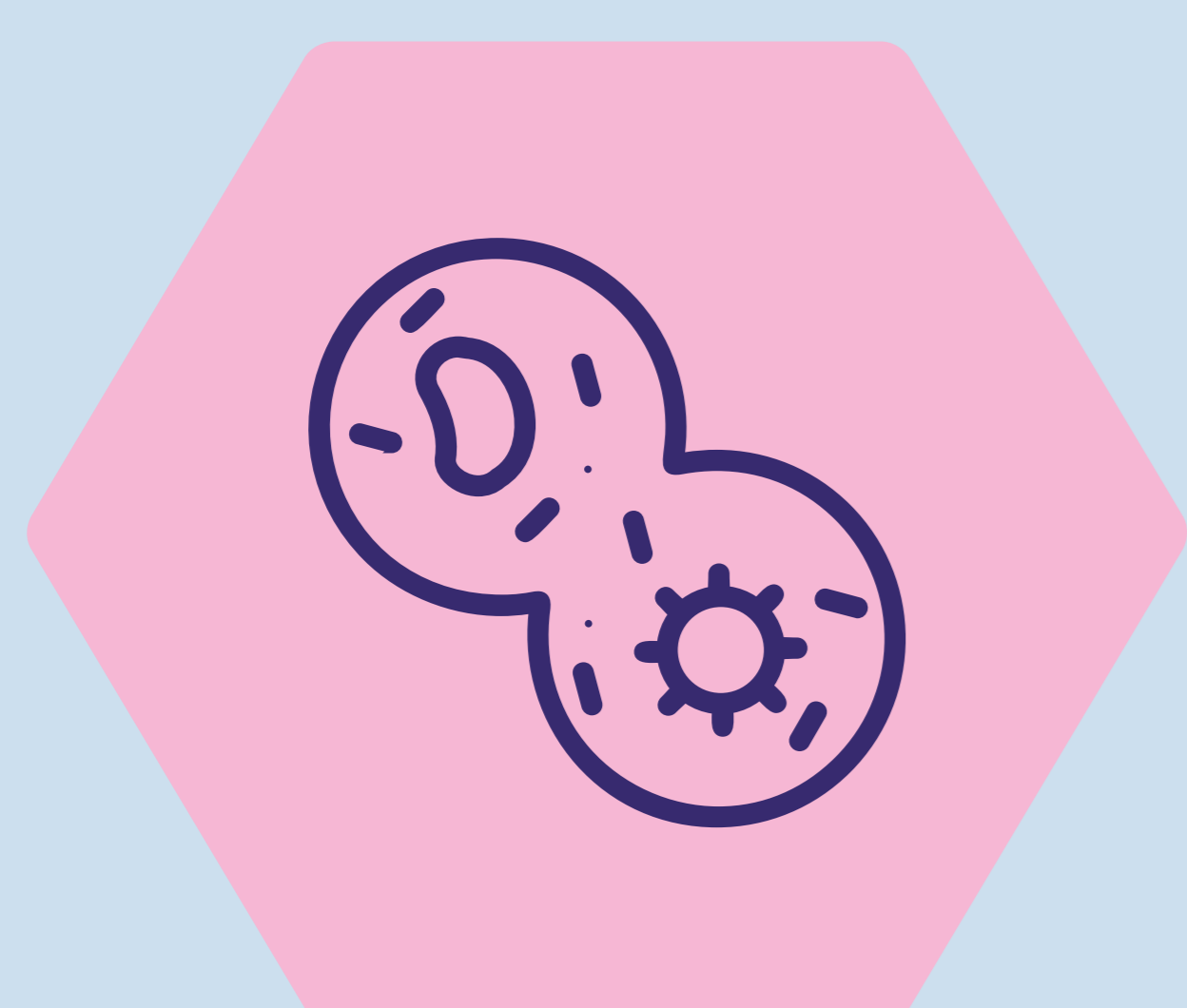
iPROLEPSIS

**Psoriatic Arthritis
inflammation explained
through multi-source data
analysis guiding a novel
personalised digital care
ecosystem**



Psoriatic Arthritis (PsA) is a chronic, progressive, inflammatory disease affecting 1-2% of the general population, while manifesting in up to 30% of people with psoriasis (PsO).

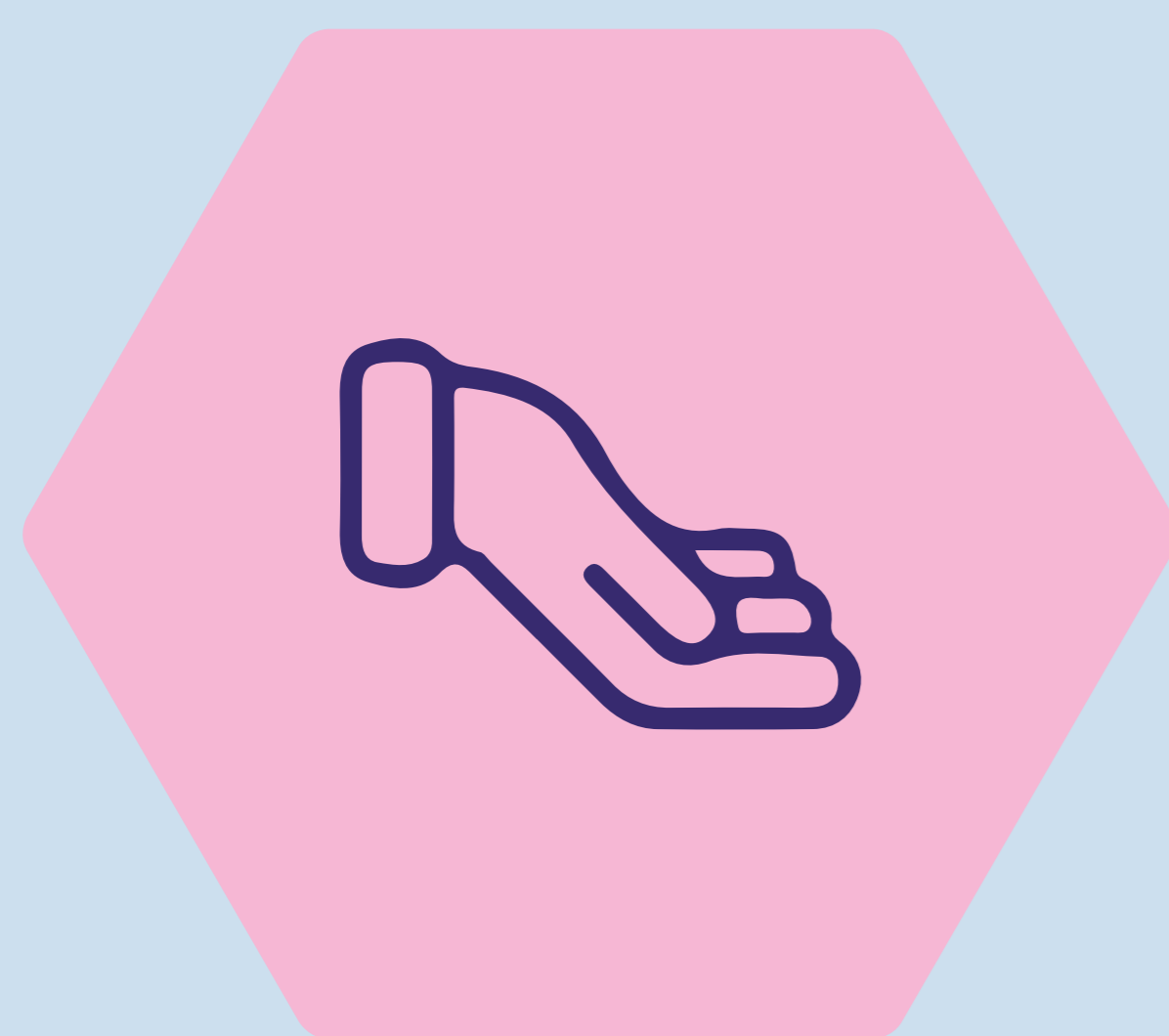
KEY OBJECTIVES



Discover PsA inflammation drivers and the role of omics, biological and environmental data



Develop AI-based technologies for PsA early detection, symptoms monitoring and disease activity prognosis



Develop ICT-based personalised interventions to sustain or improve the quality-of-life



Co-create the iPROLEPSIS ecosystem with key stakeholders following ethical, inclusive and trustworthy AI principles

PARTNERS



netcompany
intrasoft



SMARTSOL

DBC diadikasia



CICERO DEPAR



plux
WIRELESS BIOSIGNALS SA

wellics



SPR
SOCIEDADE PORTUGUESA DE REUMATOLOGIA

