

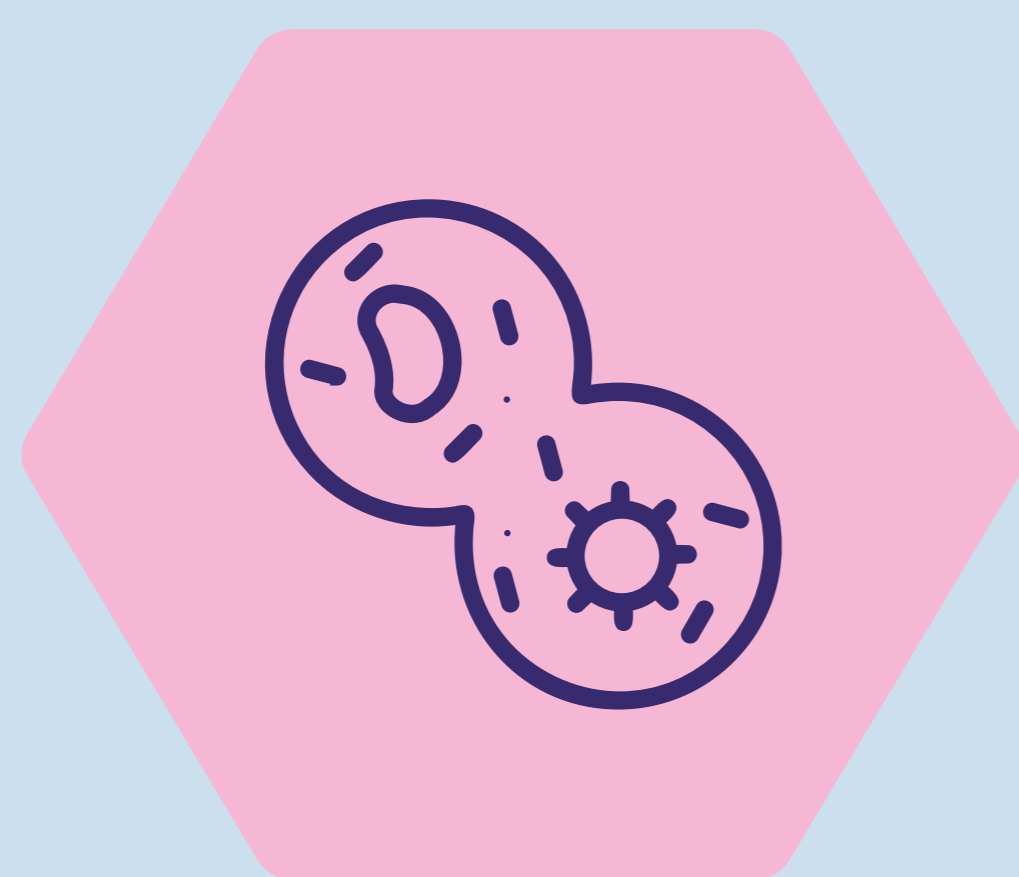
iPROLEPSIS



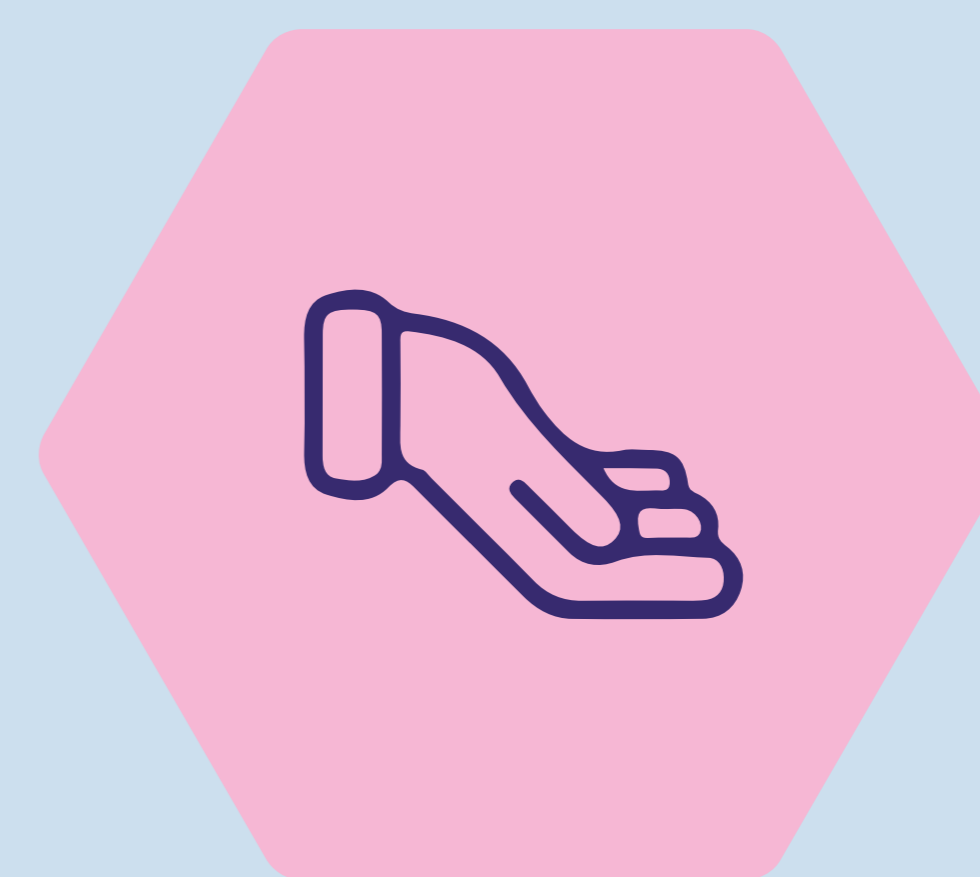
Psoriatic Arthritis inflammation explained through multi-source data analysis guiding a novel personalised digital care ecosystem

Psoriatic Arthritis (PsA) is a chronic, progressive, inflammatory disease affecting 1-2% of the general population, while manifesting in up to 30% of people with psoriasis (PsO).

KEY OBJECTIVES



Discover PsA inflammation drivers and the role of omics, biological and environmental data



Develop ICT-based personalised interventions to sustain or improve the quality-of-life



Develop AI-based technologies for PsA early detection, symptoms monitoring and disease activity prognosis



Co-create the iPROLEPSIS ecosystem with key stakeholders following ethical, inclusive and trustworthy AI principles

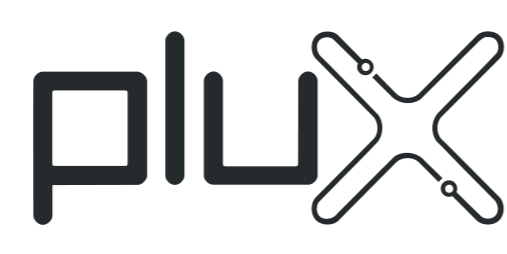
PARTNERS



Netcompany



SMARTSOL



Uniklinikum Erlangen

